

Lots more information can be found on our website, recovering wildlife. the views and appreciate the in the area to take a walk, enjoy interesting and pleasant places has become one of the most massive amounts of work from the Trust's volunteers, it people and wildlife, but now, after clear-felling and with confers and was a dark and unwelcoming place for both Until the mid-1990s, the whole woodland was cloaked in is an Iron Age hillfort, listed by Cadw as a Scheduled Ancient Monument. A mediaeval mottle bank crowns the summit and provides panoramic views.



Originally part of the Ruperra Castle estate, Coed Craig Ruperra now belongs to Ruperra Conservation Trust, a small local charity. Our aim is to conserve and restore the biodiversity and built heritage of this fantastic site. The Trust relies on grants, donations and membership income to continue its essential restoration work, and has an active and friendly volunteer group which always welcomes new helpers of all ages and abilities.

Welcome to Coed Craig Ruperra!

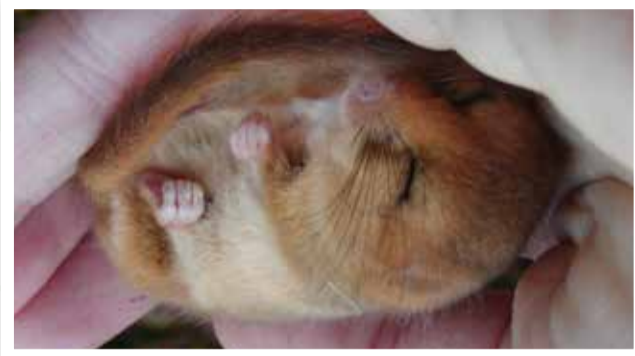
COED CRAIG RUPERRA



to avoid disturbance to wildlife.

although we would ask that they are kept out of our ponds climbs or gentler gradients. We welcome well-behaved dogs, riders can enjoy a variety of paths with a choice of steep The woodland is open all year round and walkers and horse-Trust are now eradicating - a major challenge.

species such as Rhododendron and Cherry Laurel which the southern side. Some are problematic, particularly invasive and exotic plantings are still visible, particularly on the woodland was used as an extension of the castle garden, During its ownership by Ruperra Castle, much of the



shelter as they move around the site.

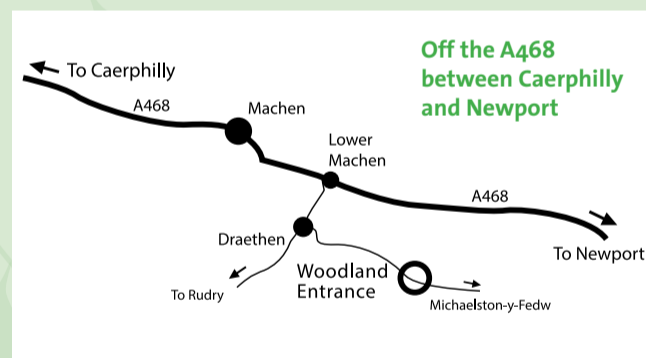
which birds and animals such as Dormice can find food and hedges. These are particularly good as wildlife 'corridors' in - Oak, Ash and Hazel. We're also planting lots of native particularly the ones which were probably here originally We've planted over 35,000 native broadleaved trees,

mammals that live here, reducing biodiversity. fewer food sources. This in turn affects the birds and needed by flowering plants, so nectar-loving insects have The dense evergreen cover of confers reduces the light replanted with confers, usually in the early 20th century.

at least 1600, but was cleared of its original native trees and Site. This means it was on woodland registers as far back as Coed Craig Ruperra is a 150-acre Planted Ancient Woodland

The Woodland

How to find us



Care for Ruperra

Whilst you enjoy this beautiful place please help us to care for it by:

- Keeping to the paths
- Taking your litter home
- Keeping your dog under control
- Not picking wild flowers
- Not lighting fires



Ruperra Conservation Trust

You can help Ruperra Conservation Trust look after Coed Craig Ruperra. Why not join our group of volunteers? All ages are welcome and no experience is needed - just enthusiasm!

Ruperra Conservation Trust is supported by CADW, Caerphilly County Borough Council, WCVA, Environment Wales, National Resources Wales, The National Lottery, Biffa Award and many others.



Why not become a member and help us to protect this special place?

Each season has its own interest. In early spring, volunteers help with a 'Toad Patrol' along the main boundary. In summer, several species of bat are found in the woodland, and a nearby roost of rare Greater Horseshoe bats forage here. Because of these, the woodland is now designated a Site of Special Scientific Interest.

Ruperra has various habitat types, from wet woodland to grassy heath, and we have added to these with new ponds, in which you'll find toads, frogs and newts. Water bodies are important for other wildlife too, such as birds and insects, and you may see dragonflies hawking over the surface or a Blackbird coming down to drink or bathe. Our wildflower meadow provides summer food for insects and basking spots for reptiles.



including Ancient Woodland Indicators such as Bluebell, Wild Daffodil and Herb Paris. Other ongoing surveys provide information on residents such as Dormice, and on native and visiting birds from Blue Tit to Nighthawk.

Hazel coppice to benefit native species. Botanical surveys provide records of the many plants and fungi here, including Ancient Woodland Indicators such as Bluebell, Wild Daffodil and Herb Paris. Other ongoing surveys provide information on residents such as Dormice, and on native and visiting birds from Blue Tit to Nighthawk.

Wildlife



Please help to support the work of the Trust by joining us

Ruperra Conservation Trust

Application for membership **BLOCK CAPITALS PLEASE**

Name

Address

Postcode

Telephone

Email

MEMBERSHIP FEE (MINIMUM RATES)

Please tick one:

- Single £10 Family £15 Group £25

Donation

GIFT AID DECLARATION

As a registered charity, we are able to reclaim the tax on donations. You can make your donation and/or membership fee go further if you are a tax payer and are willing to sign the statement below.

I authorise Ruperra Conservation Trust to reclaim the tax on any donation, including annual membership donations, that I make to it in the future, or have made since April 6th 2008.

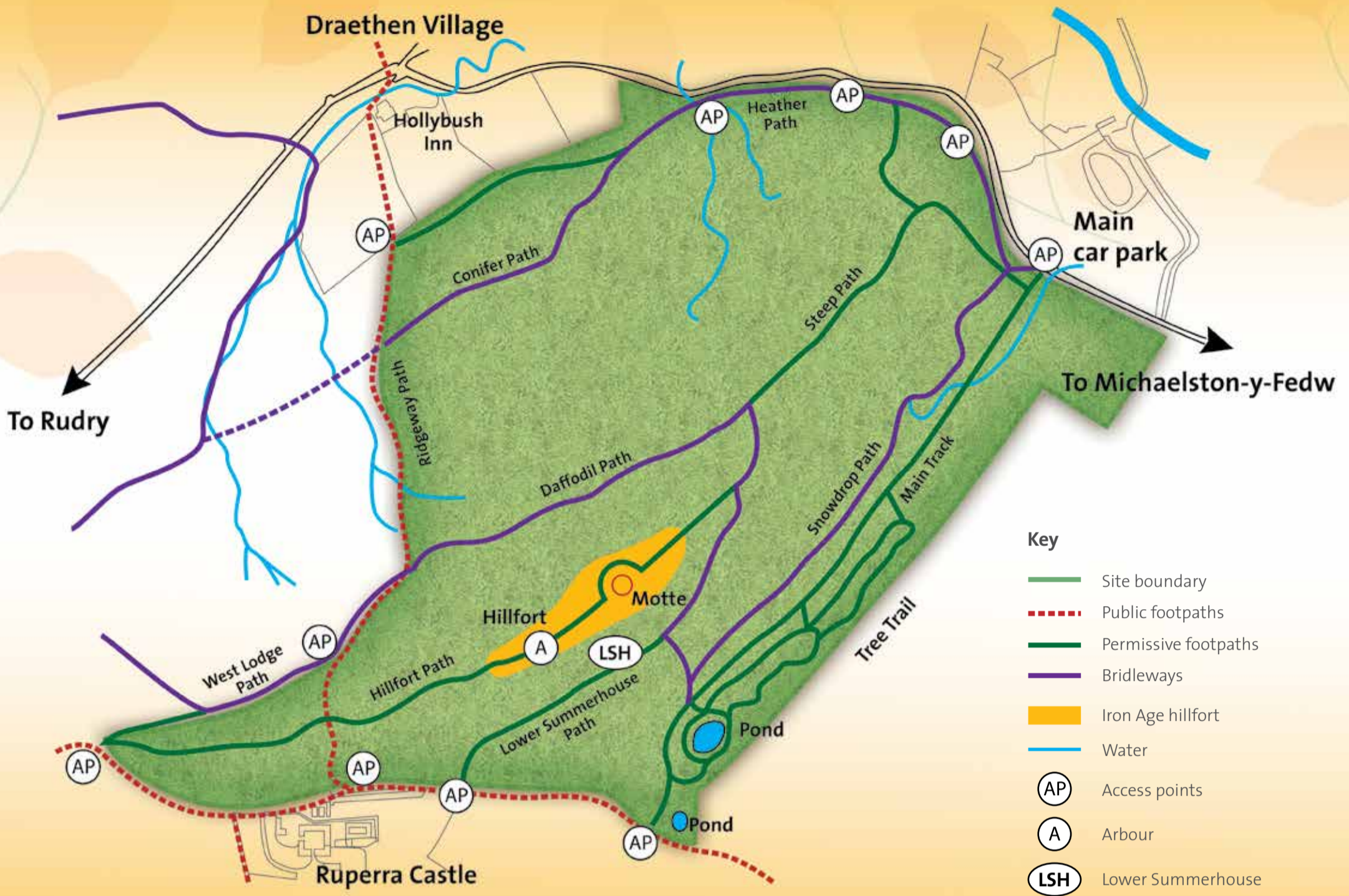
Signed Date

PLEASE DETACH AND SEND TO:

Sue Price, Membership Secretary, 5 Ty Newydd, Waterloo, Machen, CF83 8NT

Tel: **07977 599181 / 07984 665958**

ruperra@gmail.com **www.ruperra.org.uk**



PLACES OF INTEREST



COED CRAIG RUPERRA



THE HILLFORT

